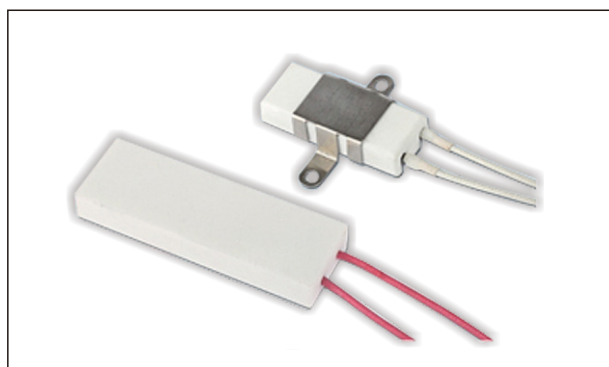
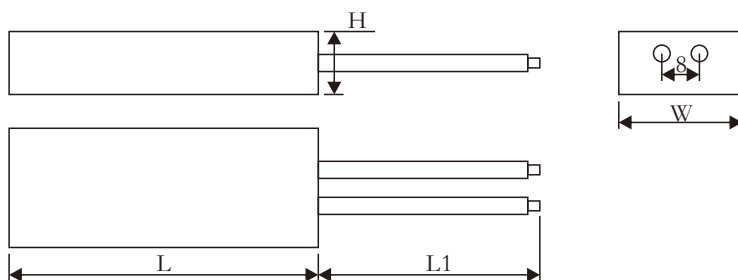


SQB 陶瓷线绕电阻器 Ceramic Wire Wound Power Resistor



本体颜色: Body Color
 标准品: Standard(White 白色)
 标示: Marking
 文字: Alphanumeric
 (根据客户要求提供相应标识)
 (According to the customer request to provide corresponding identification)

外形尺寸 Dimensions



规格 Type	功率 Power (W)	阻值范围 Resistance Range(Ω)	阻值精度 Tolerance Range	尺寸Dimensions(mm)			
				L \pm 2.0	L1 \pm 10	W \pm 0.5	H \pm 0.5
SQB	20	0.05R~1KR	J \pm 5% K \pm 10%	50	100	20	10
SQB	40	0.05R~1KR		64	200	25	12
SQB	60	0.05R~1KR		89	200	30	12

性能 Performance

试验项目 Test item	试验方法 Test method	性能要求 Specifications
耐电压 Voltage resistance	1000V直流或交流峰值 Dc or Ac peak value 1000v	无击穿或飞弧No breakdown or flashover.
温度系数 TCR	-250ppm/ $^{\circ}$ C \leq TCR \leq +250ppm/ $^{\circ}$ C	$\leq \pm 250 \times 10^{-6} / ^{\circ}$ C
短时间过载 Short Time Overload	电阻器施加10倍额定低功耗的电压5秒 Applied 10 times rated power for 5 seconds.	无机械损伤, There is no mechanical damage. $\Delta R \leq \pm (2\%R + 0.05R)$
震动 Vibration	1分钟内频率从10HZ——55HZ——10HZ振幅1.5mm, 三个相互垂直的方向各2小时 Frequency is changes from 10HZ——55HZ——10HZ in a minute, and amplitude is 1.5mm, both three perpendicular direction for 2 hours.	无明显的机械损伤 No obvious mechanical damage. $\Delta R \leq \pm (1\%R + 0.05R)$
耐久性 Durability	室温下施加额定电压或者最大电压, 1.5小时通电, 0.5小时断电, 持续1000小时 Add rated power or max voltage at room temperature, power on for 1.5 hour, and power off for 0.5 hour, hold 1000 hours.	电阻的标识和外观无损毁 Resistance identification and appearance without damage. $\Delta R \leq \pm (5\%R + 0.05R)$

参考规格 Reference Standards

JIS C 5201-1

● 料号编号 ordering Information

例 Example

SQB	20	J	0R050	A
型号Type	额定功率 Rated Power	误差值 Tolerance	电阻值(Ω) Resistance	特殊码 Serial code
SQB	20:20W 40:40W 60:60W	J \pm 5%	0R050=0.05	