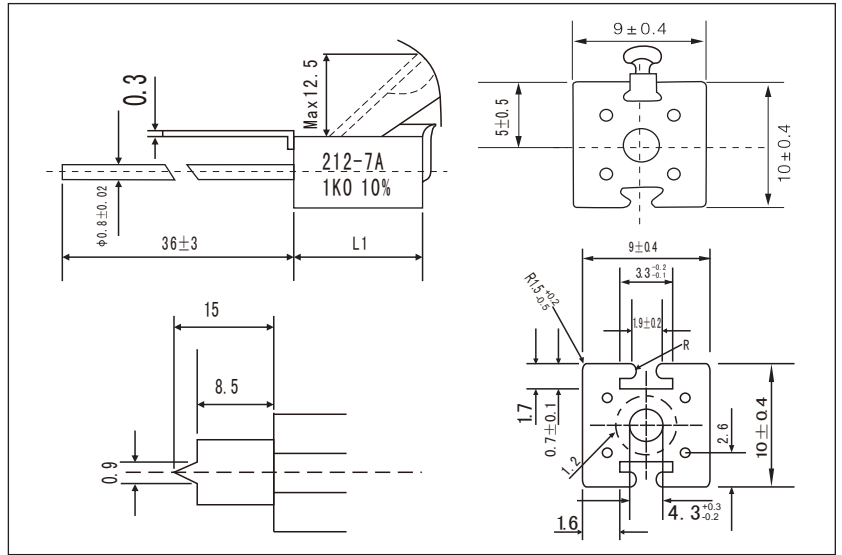
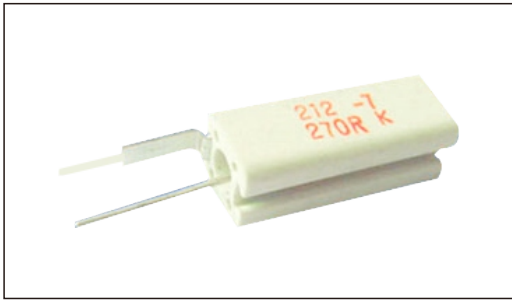


KT熔断型线绕电阻器



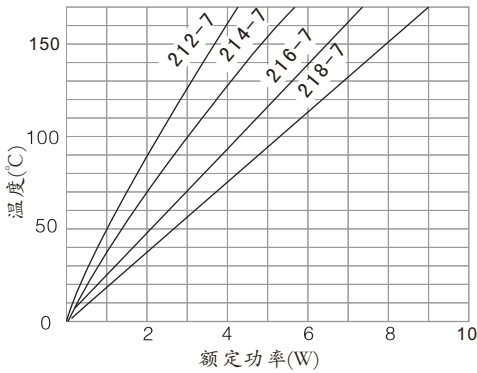
● 特点

I 瓷壳防火封装, II 安全可靠, III 字符标记

● 尺寸、功率和电阻范围

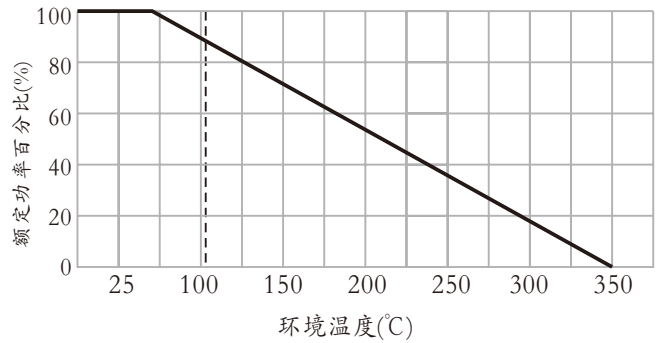
| 类型 | 额定功率(W) | | 阻值(Ω) | | | 外形尺寸(mm) |
|-------|---------|-----|--------|-------|-----|----------|
| | 0℃ | 70℃ | Max10% | Min5% | Max | |
| 212-7 | 3.0 | 2.0 | R18 | R33 | 1K5 | 25±1.0 |
| 214-7 | 5.5 | 2.5 | R18 | R33 | 3K3 | 38±1.0 |
| 216-7 | 7.0 | 3.5 | R22 | R51 | 4K7 | 50±1.5 |
| 218-7 | 10.0 | 4.5 | R33 | R91 | 8K2 | 75±2.0 |

● 焊点温升图



在正常工作条件下, 焊点温度不得超过150℃, 焊点温度等于环境温度加上施负荷引起的温升。

● 降功耗曲线



● 参考规格

JIS C 5201-1

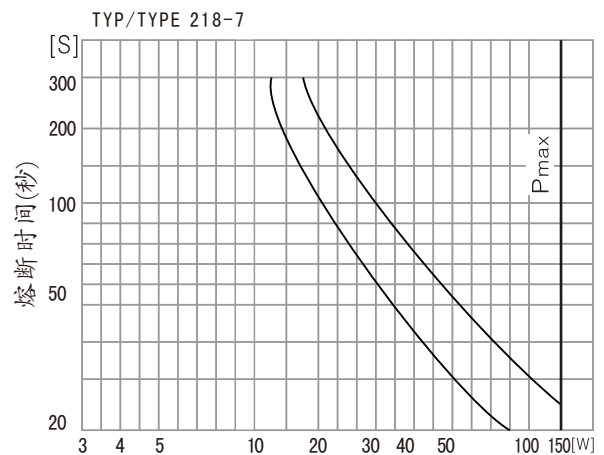
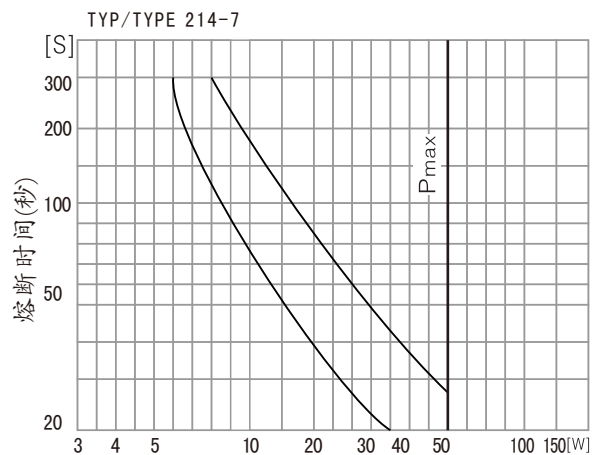
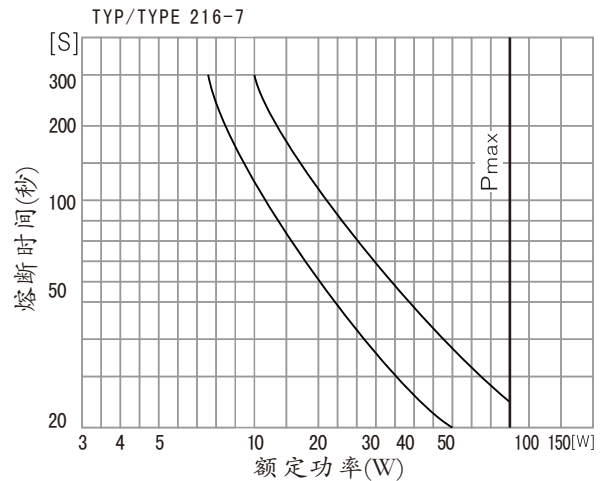
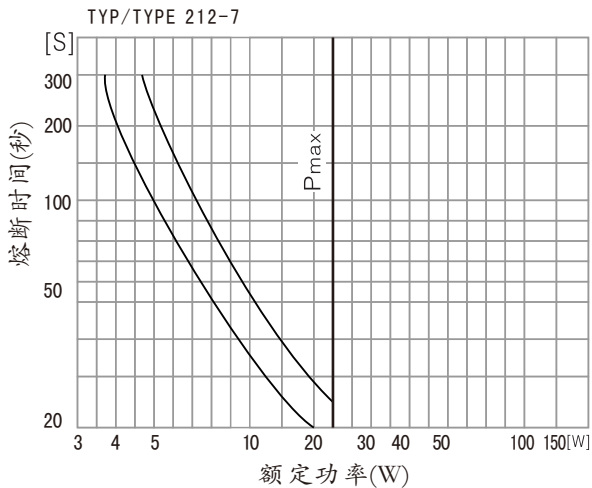
● 料号编号

Example:

| | | | | |
|----|--------------------------|-----------------------------------|-----------------|-------------------------------------|
| KT | 214 | 2W | J | 100R0 |
| 型号 | 类型 | 额定功率 | 精度 | 阻值 |
| KT | 212 214 216 218 | 2W 2.5W 3W 3.5W | J=±5% K=±10% | 0R100=0.1Ω 1R00=1Ω 100R0=100Ω |

KT熔断型线绕电阻器

熔断时间与负荷图



性能

| 试验项目 TEST ITEM | 性能要求 SPECIFICATIONS |
|---|---|
| 精度(Tolerances) | ± 5% (J) , ± 10% (K) |
| 温度系数(Temperature coefficient) | (-80~+500) × 10 ⁻⁶ /°C |
| 最大持续工作电压(Max.cont.work.voltage) | $\sqrt{P \times R}$ |
| 绝缘电压(Insulation voltage) | 2000V |
| 绝缘电阻(Insulation resistance) | ≥ 1GΩ |
| 气候类别(Climatic category) | 55/150/56 |
| 温度范围(Temperature range) | -55~150°C |
| 降功耗(Derating) | 参看“焊点温升图” |
| 失效率(Failure rate) | 近似值 100 × 10 ⁹ h ⁻¹ |
| 长期过载(Load life)P70,70°C,1000hrs | ΔR ≤ ± (5%R+1.0Ω) |
| 稳态湿热(Damp heat,steady steady)40°C, 93%, r,h,56d | ΔR ≤ ± (5%R+1.0Ω) |
| 气候顺序(Climatic category) | ΔR ≤ ± (5%R+1.0Ω) |
| 引出端强度(Terminal tensile strength) | ΔR ≤ ± (1%R+0.05Ω) |
| 抗拉强度 (Anti-pull strength) | 50N |
| 耐焊接热 (Resistance to sold,heat)260°C,10s | ΔR ≤ ± (1%R+0.05Ω) |
| 可焊性 (Solderbility) | IEC68-2-20(1968)槽焊法, 235±5°C,2±5s(solder bath method) |